

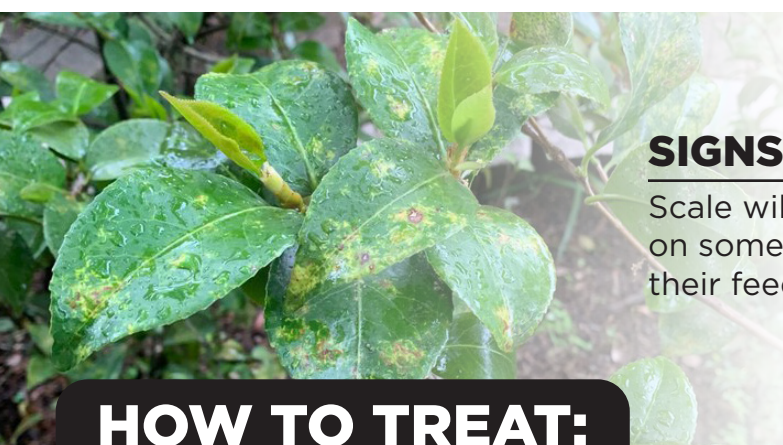


SCALE

These insects feed on the sap of plants, causing stunted, discolored, and wilted growth.

WHAT TO LOOK OUT FOR:

Scale can be found year-round on a wide variety of trees and plants. They will be on stems, leaves, and fruits.



SIGNS OF INFESTATION:

Scale will cause yellowing and browning of leaves and on some plants, they can cause honeydew to seep from their feeding sites.

HOW TO TREAT:

PREVENTION

Scale infestations can be prevented through application of a systemic insecticide at the onset of growing season.

FERTILIZER

Scale insects damage their plant hosts by extracting sugars and nutrients from the leaves and stems. Give your plant its strength back with a combination of Super Charged Moon Juice™ and Moon Dust™.

TREATMENT

Combine a topical treatment with a systemic drench to get both a quick knockdown and lasting protection.



SCAN HERE FOR MORE INFORMATION!

SCALE TREATMENT PACKAGE: \$179⁹⁹



SUPER CHARGED MOON JUICE™

+



MOON DUST™

+



SYSTEMIC INSECTICIDE

+



MALATHION

+



HOSE END SPRAYER

Recommended products are not guaranteed to resolve issue. Always follow all instructions on chemical labels. Call or see store for questions.